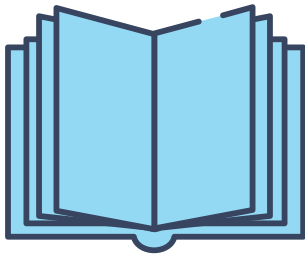




Boundary Commission for England

Easy read Guide to the 2023 Review





This is an easy read version of the Guide to the 2023 Review, published by the Boundary Commission for England.

To read our full version of this Guide, click [here](#) or search bit.ly/bceguide online.



Hard to understand words will be in **bold and underlined**. You can check what they mean on page 13.



If you have any questions, please get in touch. You can do this via:

Letter

Boundary Commission for England
35 Great Smith Street
London
SW1P 3BQ

Phone

020 7276 1102

Email

information@
boundarycommissionengland.gov.uk

Contents

Who we are and what we do	4
The 2023 Boundary Review	5
What we consider	7
Local ties	7
Local geography	8
Existing boundaries	8
Names	8
How the review takes place	9
Initial consultation	9
Secondary consultation	10
Revised proposals	11
Find out more	13
Hard words	14

Who we are and what we do



We are the Boundary Commission for England (BCE). We are independent and impartial.



It's our job to take a good look at all the **constituencies** in England.



We make sure every constituency has roughly the same number of **electors**. These are the people who are registered to vote.



Your **MP** speaks up for your area in **Parliament**, where laws are made.



The 2023 Boundary Review will check that every MP speaks up for around the same number of electors.



We are not responsible for the Boundary Commissions for Northern Ireland, Scotland or Wales. These are separate to us.

The
Local Government
Boundary Commission
for England

We don't review local government boundaries. This is done by the Local Government Boundary Commission for England (LGBCE).

The 2023 Boundary Review



The rules we follow are set by Parliament.

Parliament says that:

- There should be **543** constituencies in England.
- Every constituency should have between **69,724** and **77,062** people who are registered to vote.

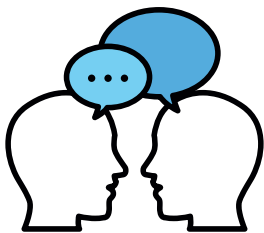


2023

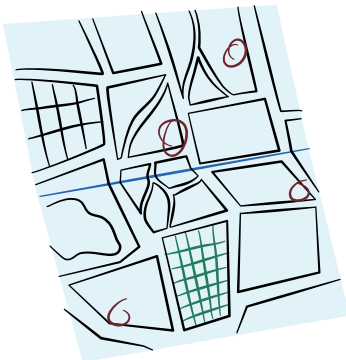
This process is called the 2023 Boundary Review, because it will finish by July 2023.



When making decisions, we have to use the number of people who were registered to vote on the **electoral register** on 2 March 2020.

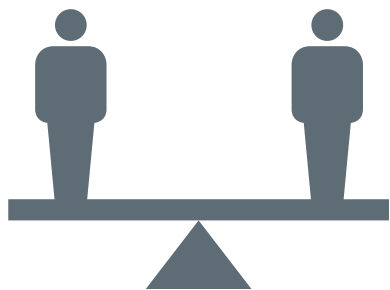


We want people to tell us about their local areas, to help us make fair decisions on constituency boundaries.



To see the maps for your area, search online for **bcereviews.org.uk**.

What we consider



We have to keep to the rule which says each constituency must have roughly the same number of electors. However, we also consider:

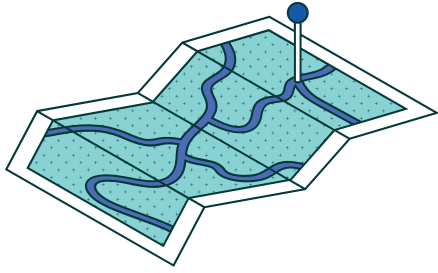
Local ties



We want to hear from you about your local area, so we get it right as much as possible in the new map of constituencies.

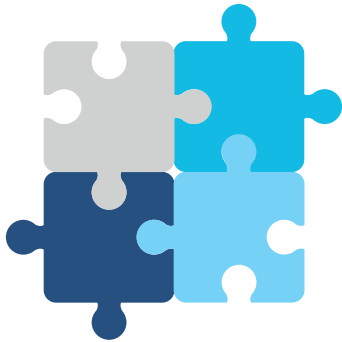


For example, you can tell us if the constituency we suggest for your area includes things like the schools, libraries, or places of worship you usually go to.



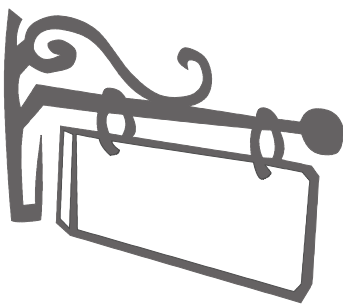
Local geography

We think about how people travel within and between areas. To do this, we may take a look at things such as rivers, hills, and major roads.



Existing boundaries

We may take into account the boundaries of constituencies as they are now, as well as local government boundaries.

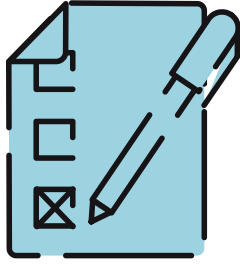


Names

We sometimes give different names to constituencies when their boundaries change. This makes sure that what they are called reflects the communities who live there.

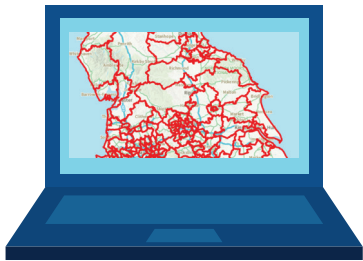


However, when there is strong support for a different name, we consider this too.



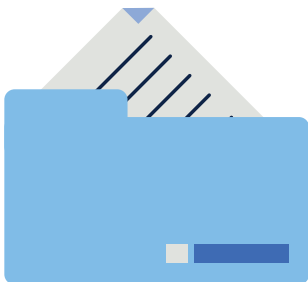
We don't think about how the changes we suggest might affect political parties.

How the review takes place



Initial consultation

First, we tell everyone what we think the new constituency boundaries should look like - these are our **initial proposals**. People can look at our ideas on our online portal, bcereviews.org.uk.



You can also see hard copies at certain places in local areas, like libraries. To find out where our maps are in your local area, check our website or contact us (see page 2).



If you have difficulty reading any of our documents and need them in a different format, get in touch. We'll look into how we can help.



We want people to tell us what they think about our suggestions during our 8 week **consultation**.



It's important to hear whether people agree or disagree with our ideas, and why. You can also suggest where you think the boundaries for your constituency should be instead.



Secondary consultation

Next, we will put all these responses on our website for everyone to read.



Everyone has 6 weeks to have their say on these comments. You can tell us what you think on **bcereviews.org.uk**, or by sending us an email or a letter.



You can also tell us your views in person at a public hearing. There will be several public hearings in each region of England.



We will say on our website where and when these will take place.



Revised proposals

To decide if the boundaries should change, we will consider what everyone has said over the review process.



We will produce a report to explain our thinking.



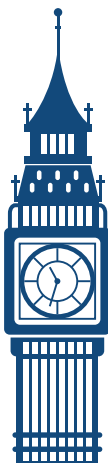
We will also publish online the comments people made via bcereviews.org.uk, in letters or emails, or said at public hearings.



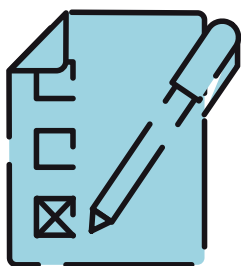
If our suggestions change, we would call these our **revised proposals**. People can again write to us to tell us what they think about them. This consultation would last 4 weeks.



We will publish these comments along with our final report.



The report will be sent to Parliament in June 2023. Parliament cannot change our suggestions.



The new constituencies will be in place at the next **general election**.

Find out more



To find out more about us or the 2023 Boundary Review, you can get in touch via phone, email or letter (see page 2), or go to our website:

boundarycommissionforengland.independent.gov.uk



We also publish news about the Review on social media. Follow us on [Facebook](#), [Twitter](#), and [Instagram](#) - we're called **@BCEReviews**.

Hard words

Constituency Where people who vote in an election live, and who an MP speaks up for.

Consultation A period of time when we ask everyone to tell us what they think about our ideas, to help us improve them.

Electors The people who are registered to vote in an area.

Electoral register (or roll) The list of names and addresses of everyone who is registered to vote.

MP or Member of Parliament The person chosen by the people in an area to speak up for them in Parliament.

Parliament A group of people who make laws for our country and check what the Government is doing.

Proposals (initial and revised) Our first suggestions for new constituency boundaries are called our initial proposals. If any changes are made because of what people have told us, these are called revised proposals.

